

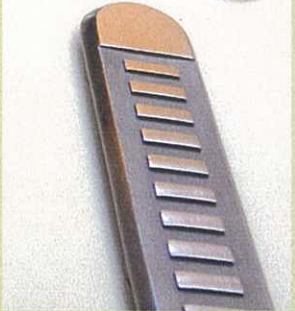
海達環保工程有限公司 Halitech Environmental Friendly Engineering Co., Ltd.

海達誘導標示有限公司 Halitech Tactile & Signage Co. Ltd.

Rm. 101 1/F, Corn Yan Centre, 3 Jupiter Street . North Point, H.K.

Tel : 31062776

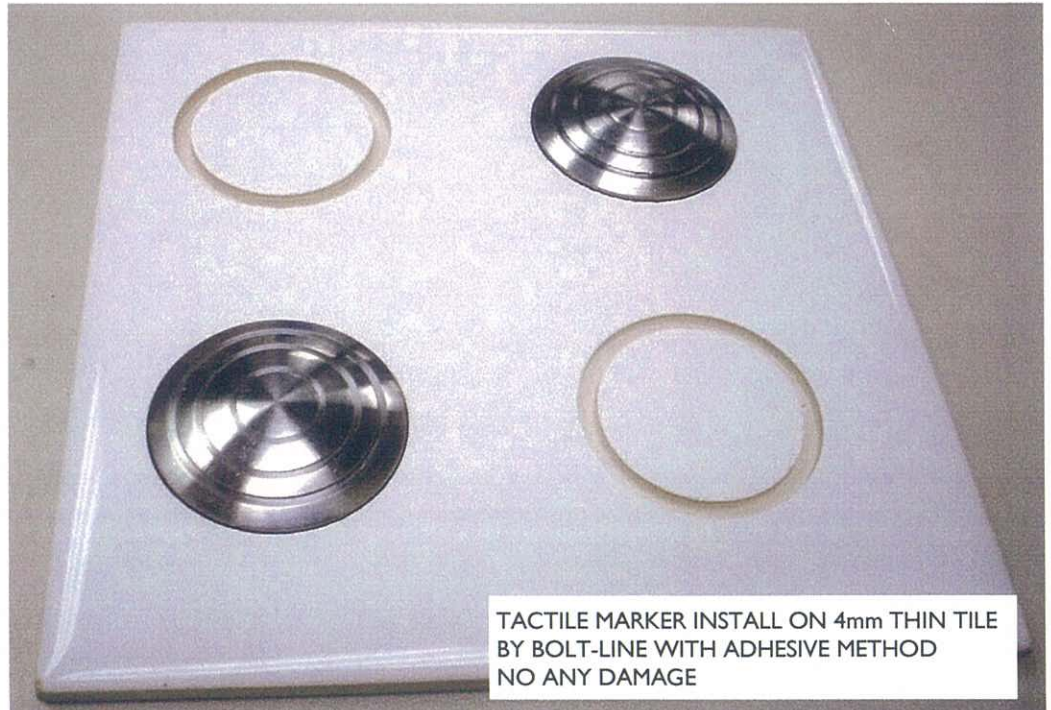
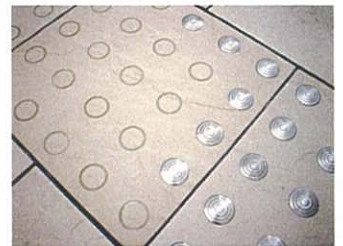
Fax : 31062774



TACTILE MARKER INSTALL ON GLASS MATERIAL
BY BOLT-LINE WITH ADHESIVE METHOD
NO ANY DAMAGE



TACTILE MARKER INSTALL ON NATURAL STONE
BY BOLT-LINE WITH ADHESIVE METHOD
NO ANY DAMAGE



TACTILE MARKER INSTALL ON 4mm THIN TILE
BY BOLT-LINE WITH ADHESIVE METHOD
NO ANY DAMAGE

TRADITIONAL METHOD ?

BAD LIST CASE IN HONG KONG USING TRADITIONAL METHOD

SCREW-IN WITH ADHESIVE METHOD ??

LOCATION AT ASD STANDARD SCHOOL



興業塑膠五金製品廠
HINGS PLASTIC & METAL PRODUCTS MFY.
 (Member of Hings group of companies)

香港新界粉嶺安樂村安居街30號新寧中心 4字樓17-18室 Unit 17-18, 4/F., Sun Ling Plaza, 30 On Kui Street, On Lok Tsuen, Fanling, N.T., H.K.
 Tel: (852) 2669 1939 (8Lines) Fax: (852) 2669 1792 Email: hingspmp@hingsgroup.com

Website: <http://www.hingsgroup.com>

門市及陳列室
 Showroom & Retail Shop

G/F., Hings Building, 594 Reclamation Street, Mongkok, Kln., H.K.
 香港九龍旺角新填地街 594 號興業樓地下

Hings Retail Shops: Wanchai • Mongkok • Macau • Shanghai • Guangzhou • Shunde



興業塑膠五金製品廠

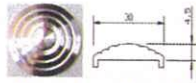
Hings Plastic & Metal Products Mfy.

Tel : (852) 2669 1939

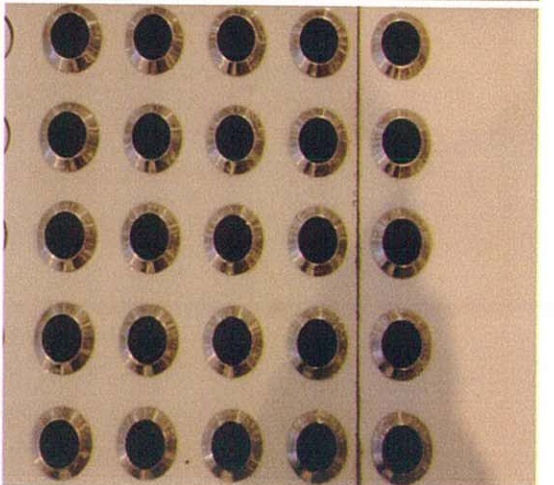
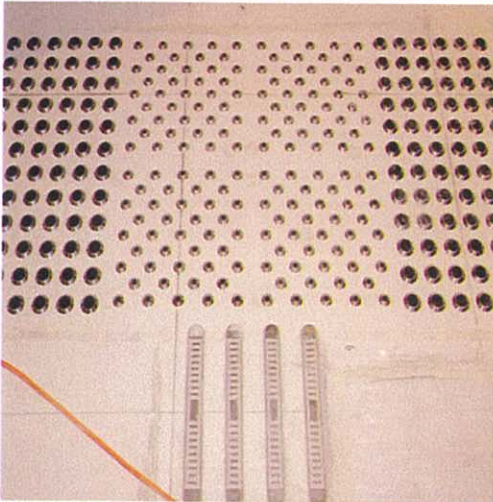
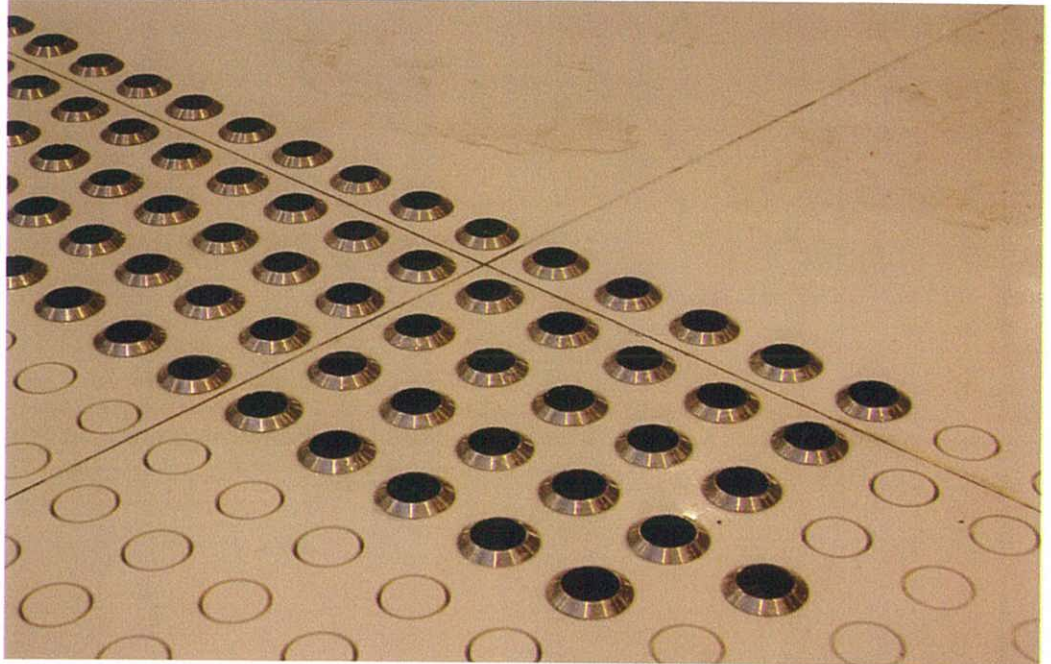
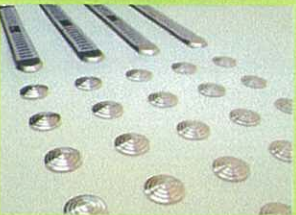
E-mail : hingsmpm@hings.hk

Fax : (852) 2669 1792

HINGS[®]
Elastomer
Systems



觀塘地鐵站 KWUN TONG MTRC STATION



Division 4 --- ACCESS ROUTE

This Division aims to ensure proper access for all people, with or without disabilities to approach, enter or leave a building independently to reach and use its facilities, such as foyers, lifts, toilets, shops, restaurants, cinemas, etc. without undue difficulty.

MANDATORY SECTION

Performance Objectives

An easily identifiable continuous and relatively level path free from obstruction or any kind of hazards shall be provided for persons with a disability to enter, move within and leave a building to reach the accessible facilities.

Obligatory Design Requirements

11. Provision of Access Route

Access shall be provided from a prominent point or points on the lot boundary, which is accessible to a public street or pedestrian way, directly to at least one entrance which is commonly used by the public or to a point directly adjacent to one entrance which is commonly used by the public and to an accessible lift, unless it is impractical to do so because of difficult terrain or unusual characteristics of the site.

In case where the main entrance is not an accessible entrance or it is impractical to provide a commonly used entrance at prominent point on the lot boundary due to difficult terrain or unusual characteristics of the site (e.g. in the case of a sloping site or presence of steep access road/driveway), this would be acceptable provided that persons with a disability could reach the building by means of vehicle and adequate directional signs shall be posted at conspicuous location of the main entrance to show clearly the location of and the route to an accessible entrance.

12. Requirements for Access Route

Width

(1) The clear width of an access route shall be not less than 1050 mm.

Free from Barriers

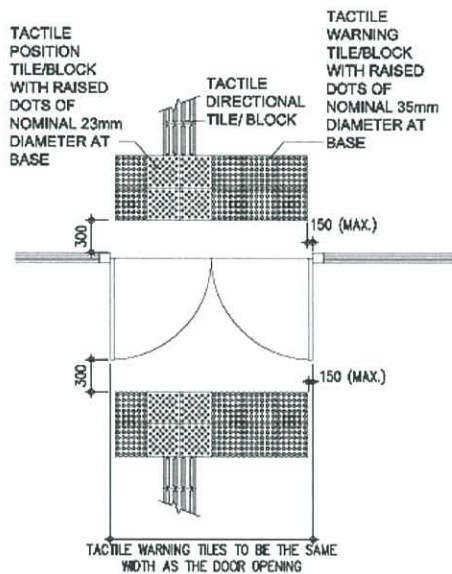
(2) Such access shall be free from protrusion hazards, steps, kerbs other than dropped kerbs, steep ramps, doors or doorways which will impede the passage of a wheelchair, or other form of barrier which will prevent access by persons with a disability.

Surface

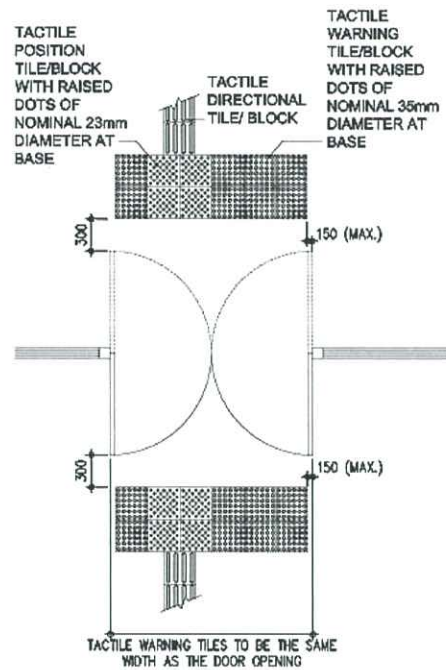
(3) The surface of an access route shall be firm.

13. Tactile Guide Path

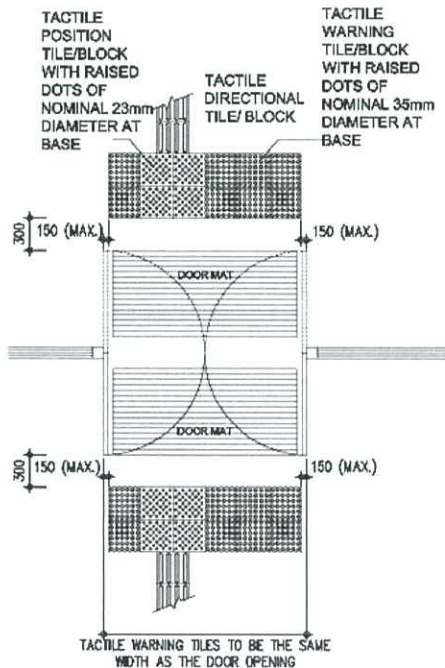
For categories of buildings as required in Table 2, such access shall be provided with a tactile guide path as illustrated in Figures 6A and 6B. Examples of specification of tactile tile/block are shown in Figure 6C.



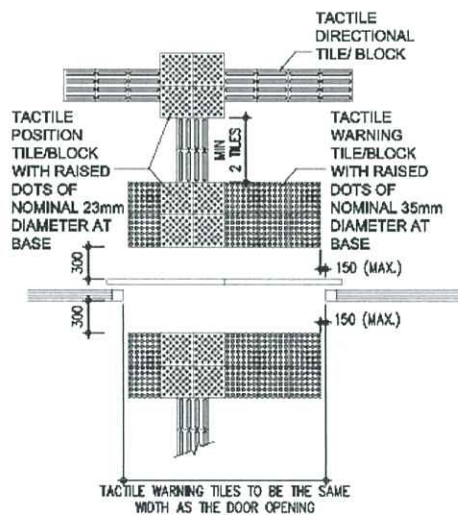
(a) Tactile warning strip at single action door entrance



(b) Tactile warning strip at double action door entrance



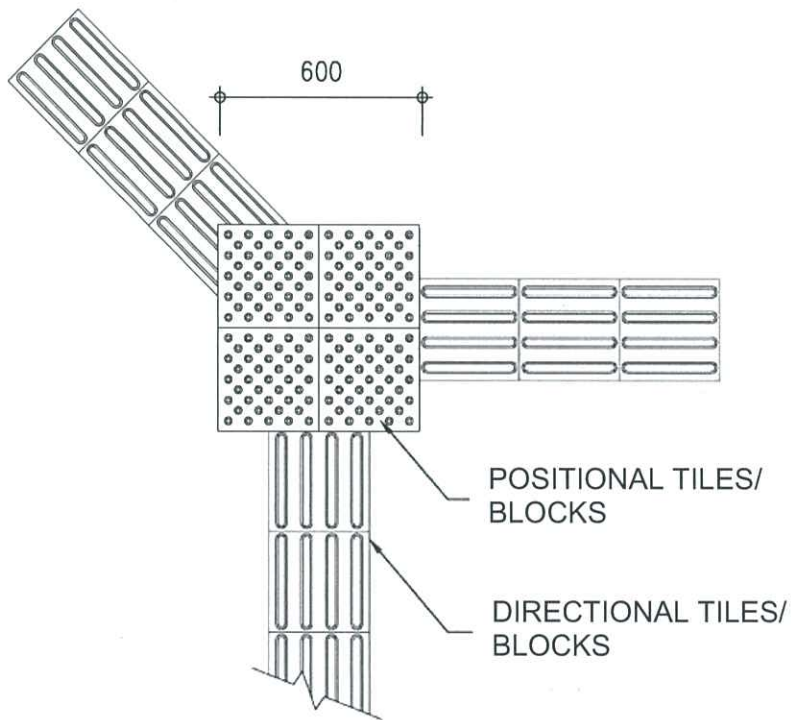
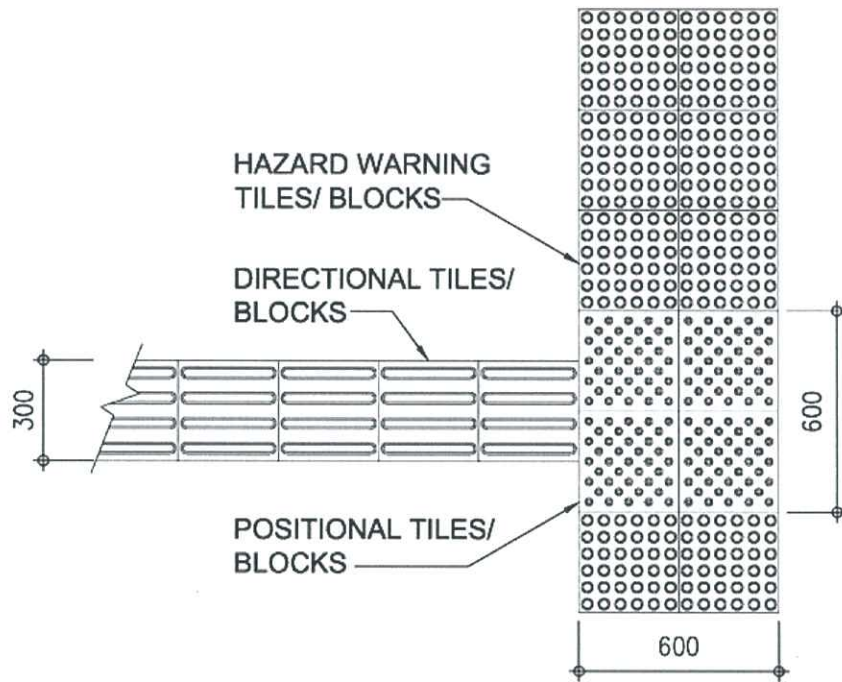
(c) Tactile warning strip at door entrance with floor mats



(d) Tactile paving at sliding door entrance

*ALL DIMENSIONS ARE IN mm

Figure 6A – Tactile Guide Paths at Building Entrances Linking up with Initial Access on the Lot Boundary and Interior Facilities



*ALL DIMENSIONS ARE IN mm

Figure 6B – Typical Tactile Guide Path Junction